

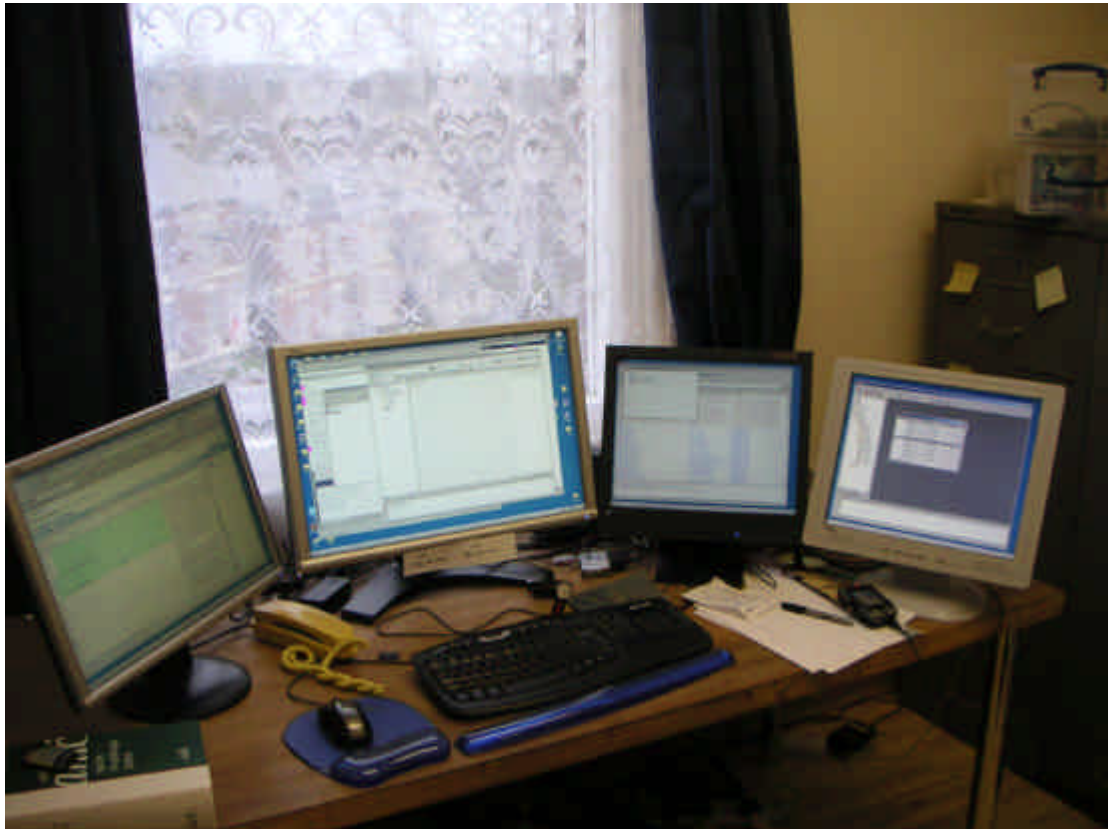
This document has 22 pages. This is page 1 of 22.
Compiled by: Josip M. Korbar (j.m.korbar@litt-translations.com)

Multiple monitors required, but how?

(if you've only got **one** (1) laptop.)

Please note:

All the 4 monitors shown below run off the same computer.

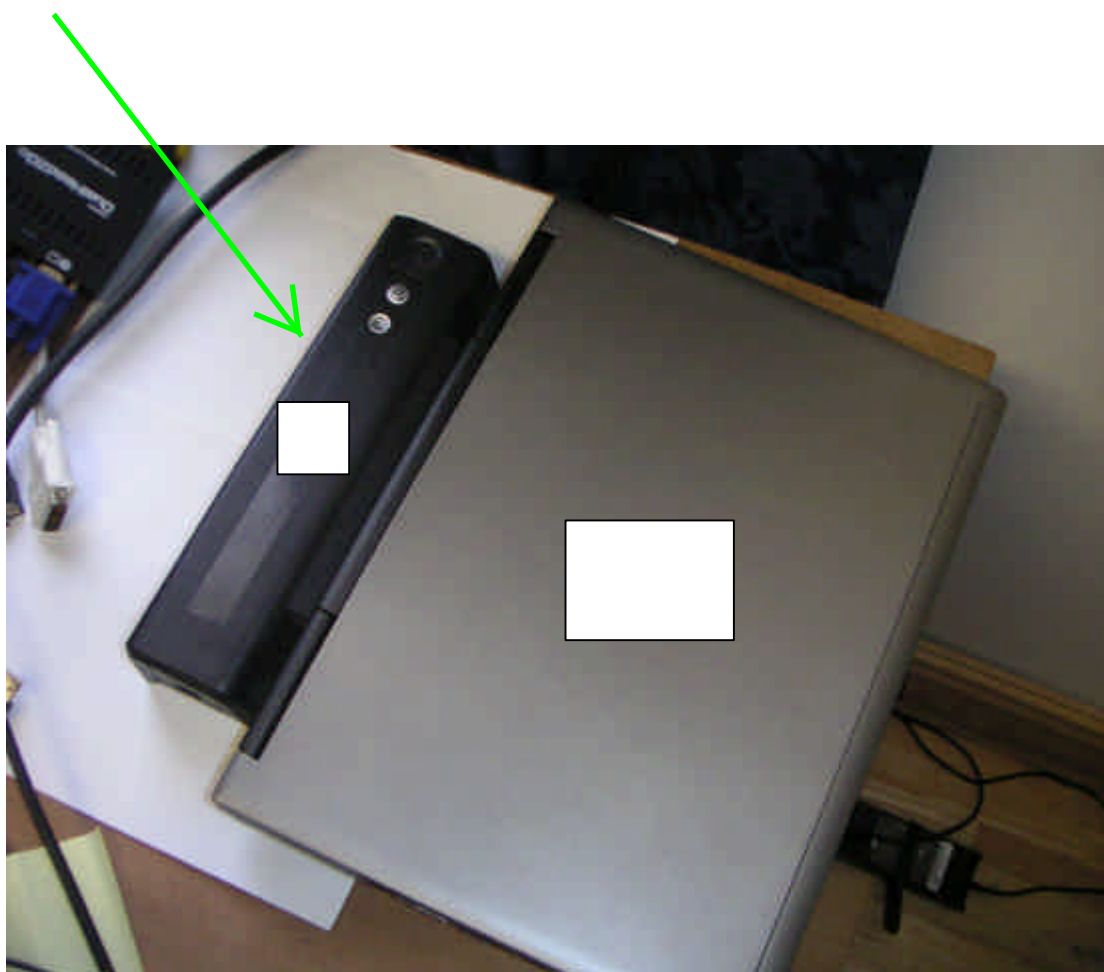


What do you need?

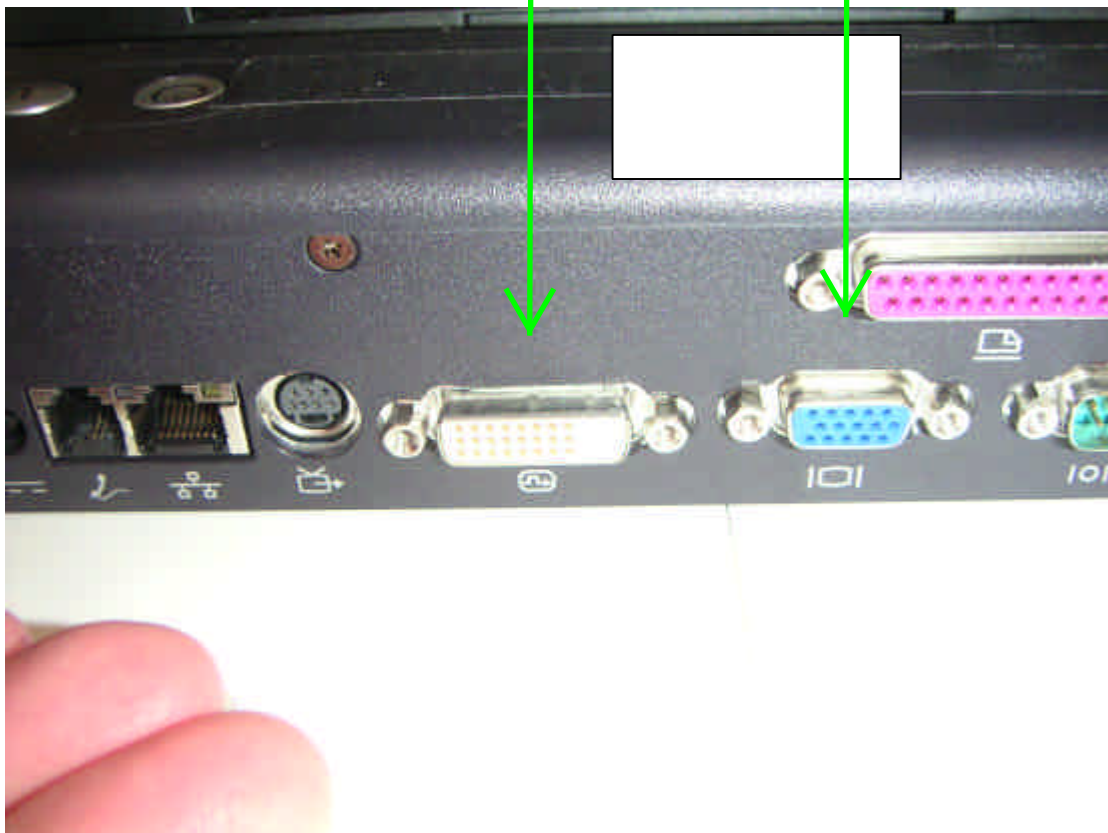
Have a look on the following pages.

(Do not forget to read the **last** page.)

You may need a **docking station** for your laptop.



A docking station may give you
a **DVI port (= digital)** and a **VGA port (= analog)**.

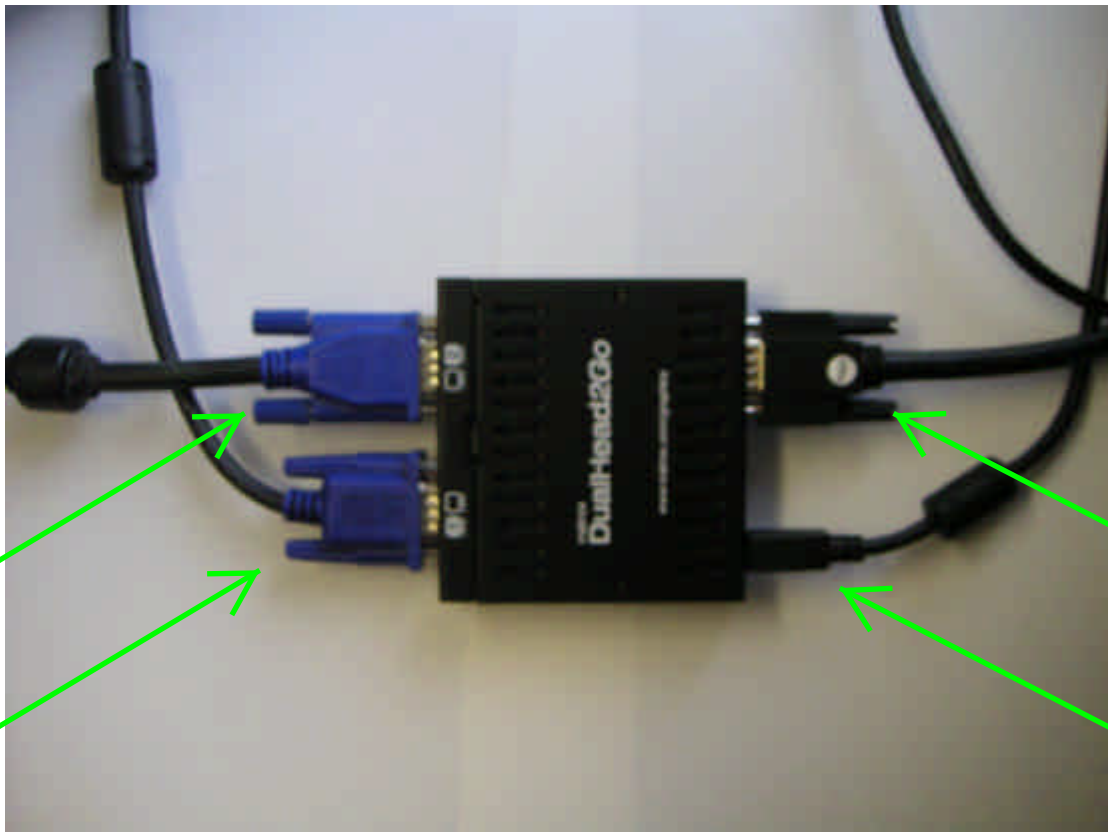


With this you could attach already 2 monitors.

You want more?

No, problem.

You could use e.g. the **Matrox DualHead2Go**.



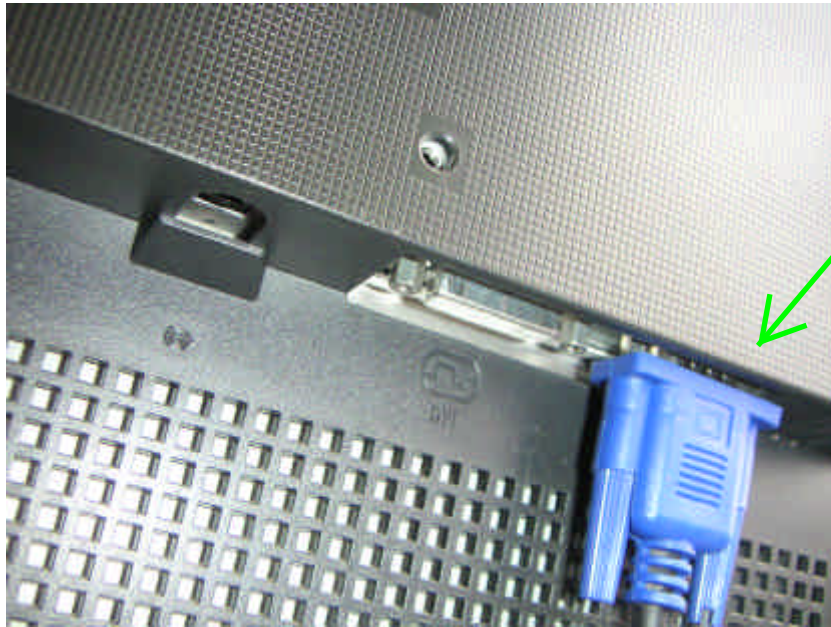
On the **left** you can see **2 VGA cables** attached.

On the **right (top)** you can see
1 VGA cable going to the
VGA port in the docking station.

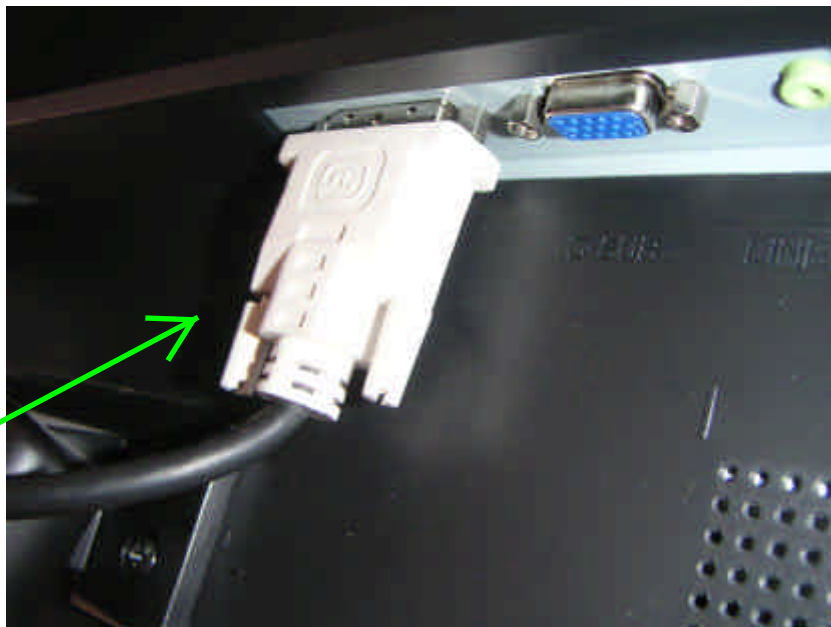
On the **right (below)** you can see
1 USB cable going to a laptop
USB port for power supply.

The **Matrox DualHead2Go** is available in different "flavours".

Matrox DualHead2Go (analog) to connect to a **VGA port (D-Sub)** on a monitor.



Matrox DualHead2Go (digital) to connect to a **DVI port** on a monitor.



As said before, the **Matrox box** is available in **4** flavours:

Matrox DualHead2Go (analog) to connect to **2** monitors with **analog** ports.

Matrox DualHead2Go (digital) to connect to **2** monitors with **digital** ports.

Matrox TripleHead2Go (analog) to connect to **3** monitors with **analog** ports.

Matrox TripleHead2Go (digital) to connect to **3** monitors with **digital** ports.

Prices vary currently.

The digital flavours seem to be more expensive at the moment.

Matrox call these products:

Graphics eXpansion Modules (GXM)

For more information please see here:

<http://www.matrox.com/graphics/en/corpo/products/home.php#gxm>

However, the Matrox box has one little “snag”...

Well, sort of...

To be precise:

Nothing is wrong with it,
but the monitors attached to it
are addressed (seen) by the computer as
1 monitor.

On the picture below, you can see **3 boxes** (2, 1, 3).

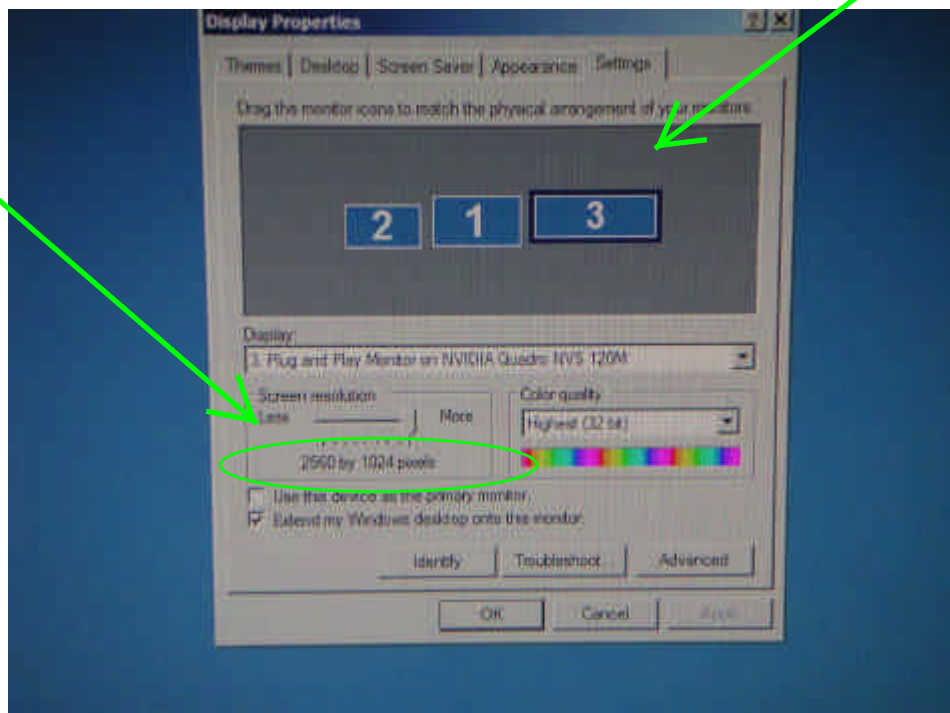
Box 3 actually consists of **2 monitors**.

Hence, you should use 2 monitors with the **same** resolution,
when using the **Matrox box** (Please check Matrox website!)

e.g. 2 x 17“ monitors with a resolution of 1280 x 1024 each.

(2 x 1280 = 2560) x 1024

(You could use 19“ monitors offering that resolution, too.
Currently, there is a maximum resolution.
For more details, check the Matrox website.)



This document has 22 pages. This is page 8 of 22.
Compiled by: Josip M. Korbar (j.m.korbar@litt-translations.com)

If you want to attach a monitor with a completely
different resolution,
the Matrox box might not be what you are looking for.

You may consider something different.

And this is:

The Village Tronic VTBook

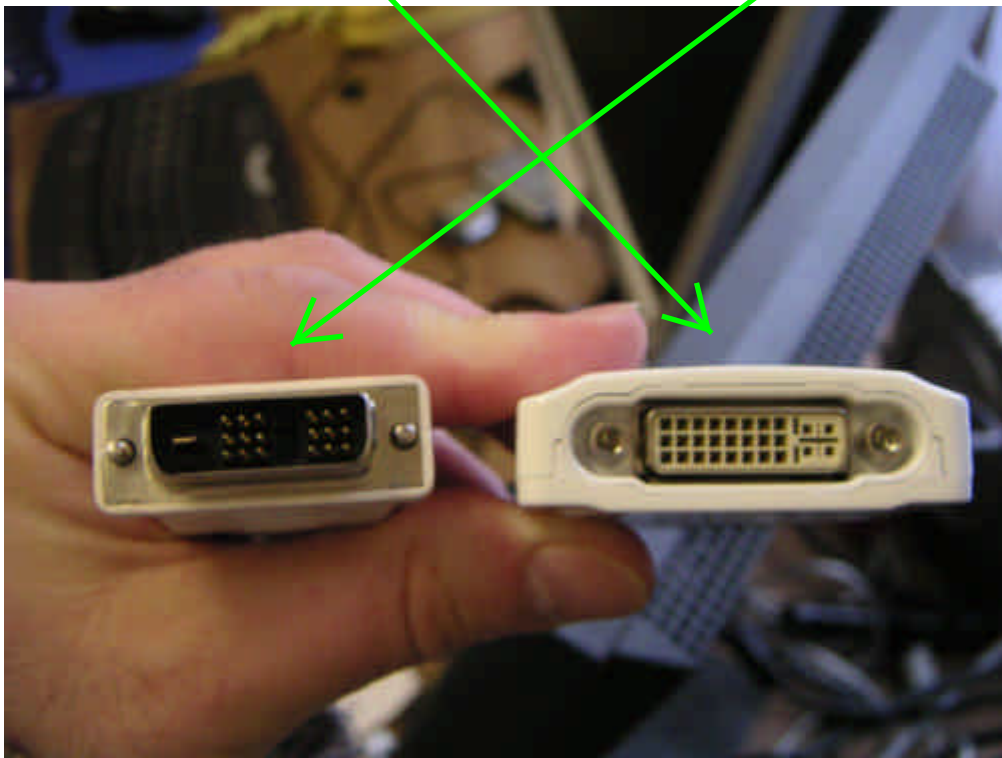


The Village Tronic VTBook

is basically another graphics card
(some people also call these items “graphics adapter”).

It is primarily intended to connect a monitor with a DVI port.

On the right, you see the **DVI port** on the VTBook with the **male end of a DVI cable**.

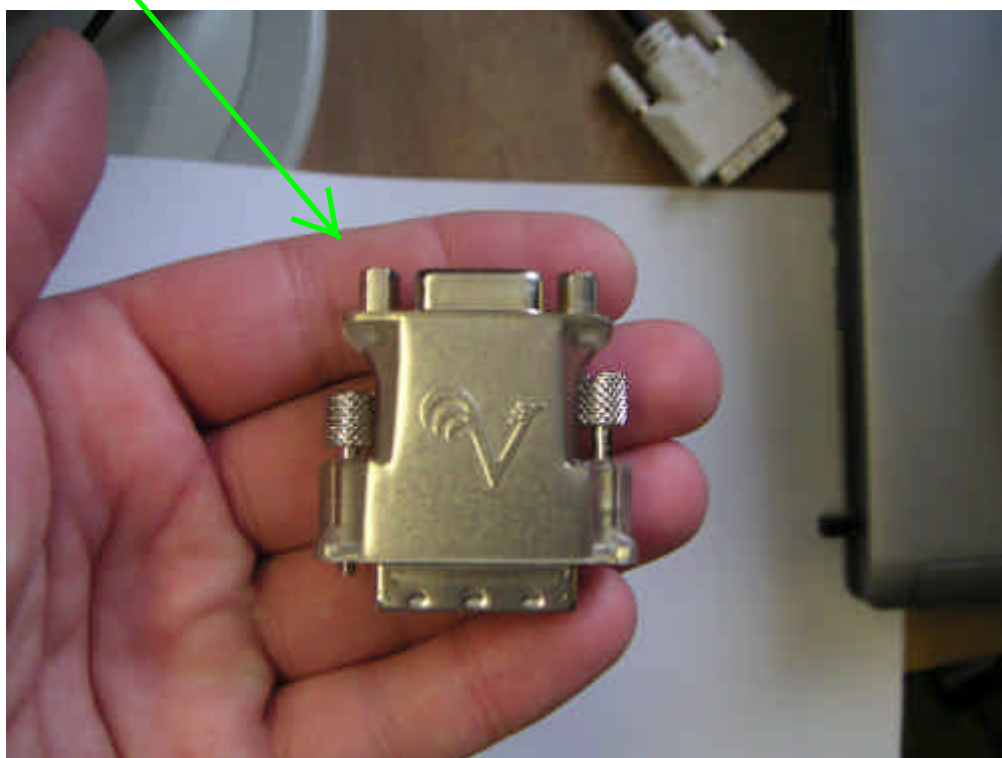


This document has 22 pages. This is page 10 of 22.
Compiled by: Josip M. Korbar (j.m.korbar@litt-translations.com)

Don't worry, if you've got an analog monitor.

The Village Tronic VTBook

comes with a **DVI-VGA adapter**.



The Village Tronic VTBook

is inserted into the **CardBus port** (also known as **PCMCIA**).

Here the situation before insertion.



This document has 22 pages. This is page 12 of 22.
Compiled by: Josip M. Korbar (j.m.korbar@litt-translations.com)

The Village Tronic VTBook

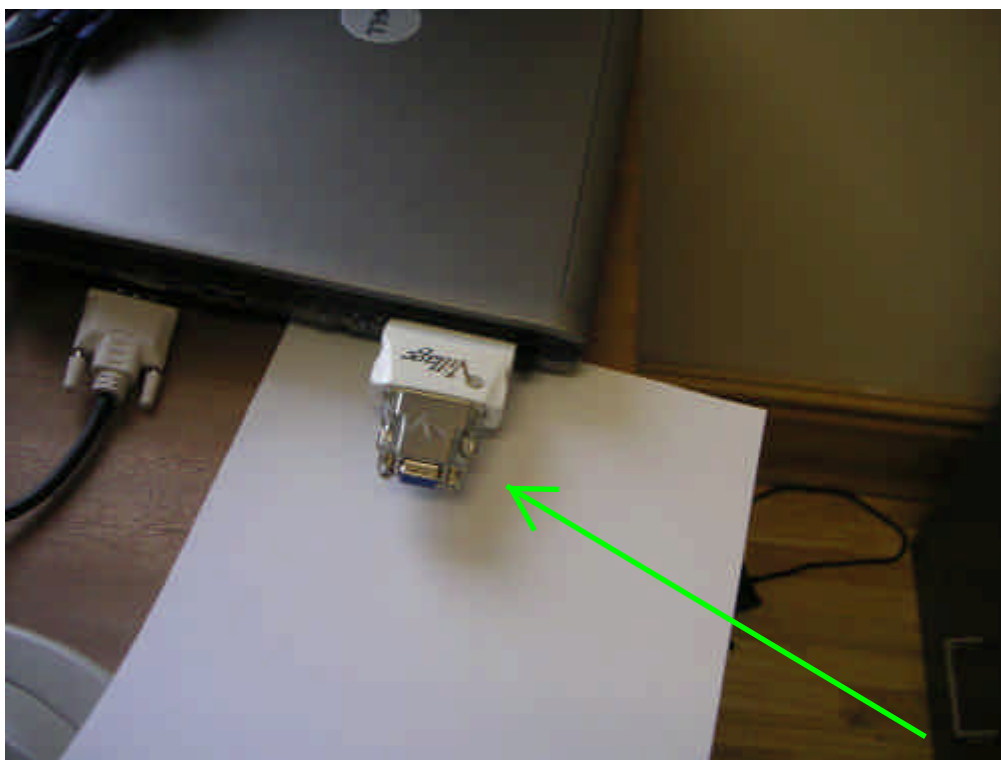
after insertion.



This document has 22 pages. This is page 13 of 22.
Compiled by: Josip M. Korbar (j.m.korbar@litt-translations.com)

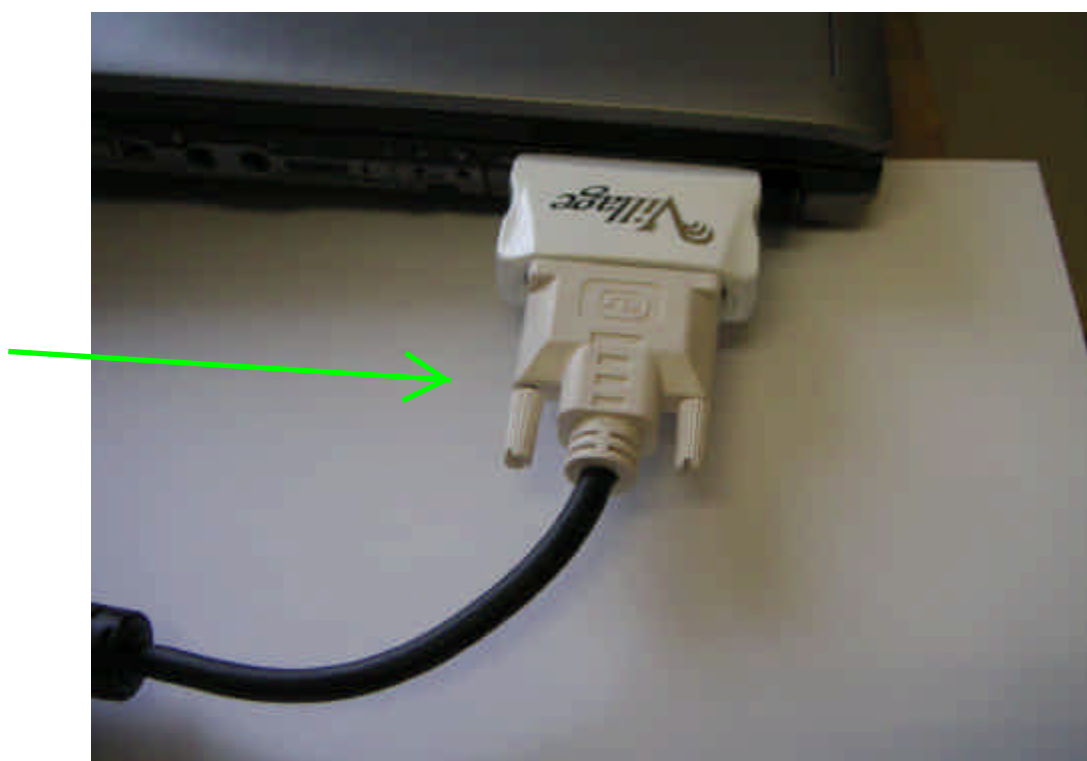
The Village Tronic VTBook

with **adapter** attached.



This document has 22 pages. This is page 14 of 22.
Compiled by: Josip M. Korbar (j.m.korbar@litt-translations.com)

If you've got a monitor with a **digital** port
the **DVI cable** can be connected directly to
The Village Tronic VTBook



This document has 22 pages. This is page 15 of 22.
Compiled by: Josip M. Korbar (j.m.korbar@litt-translations.com)

Even with
The Village Tronic VTBook
you could attach **2** monitors.

For this you would need

either the shorter

Village Tronic VTBook
Dual Head Cable
with 2 x sockets (PC Only)
16cm

or the longer

Village Tronic VTBook
Dual Head Cable
to add 2 x displays (PC Only)
1.8m

For more information please see here:

<http://www.villagetronic.com/vtbook/index.html>

And this is it?

Well, almost.

Whenever you attach a new monitor using one of devices or other similar devices for that matter, you have to make sure that the Option

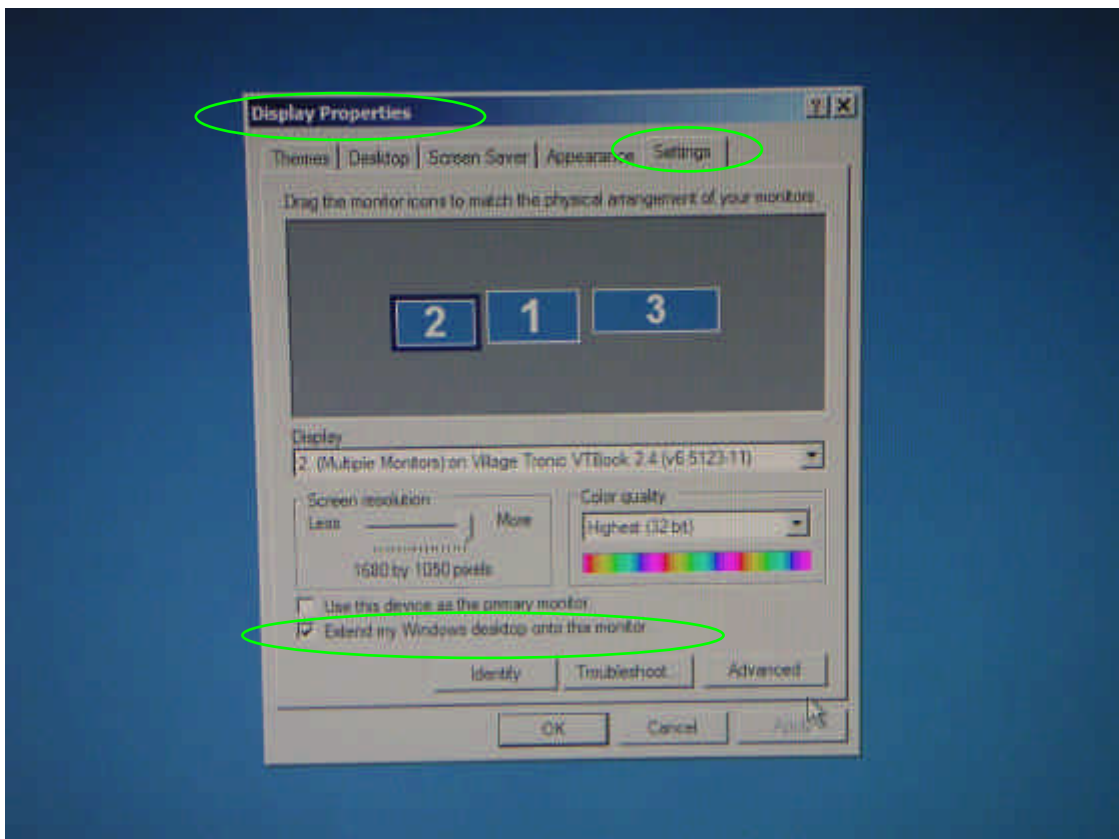
Extend my Windows desktop onto this monitor.

is ticked.

How to get to this dialog box?

Start > Control Panel > Display > Tab “Settings”

(Applies to Microsoft Windows XP Professional.
Maybe different with other operating systems.)



A few more items are to be observed.

You can move the boxes freely around using your mouse.
Just click and drag.

So you can arrange them as:

1, 2, 3

or

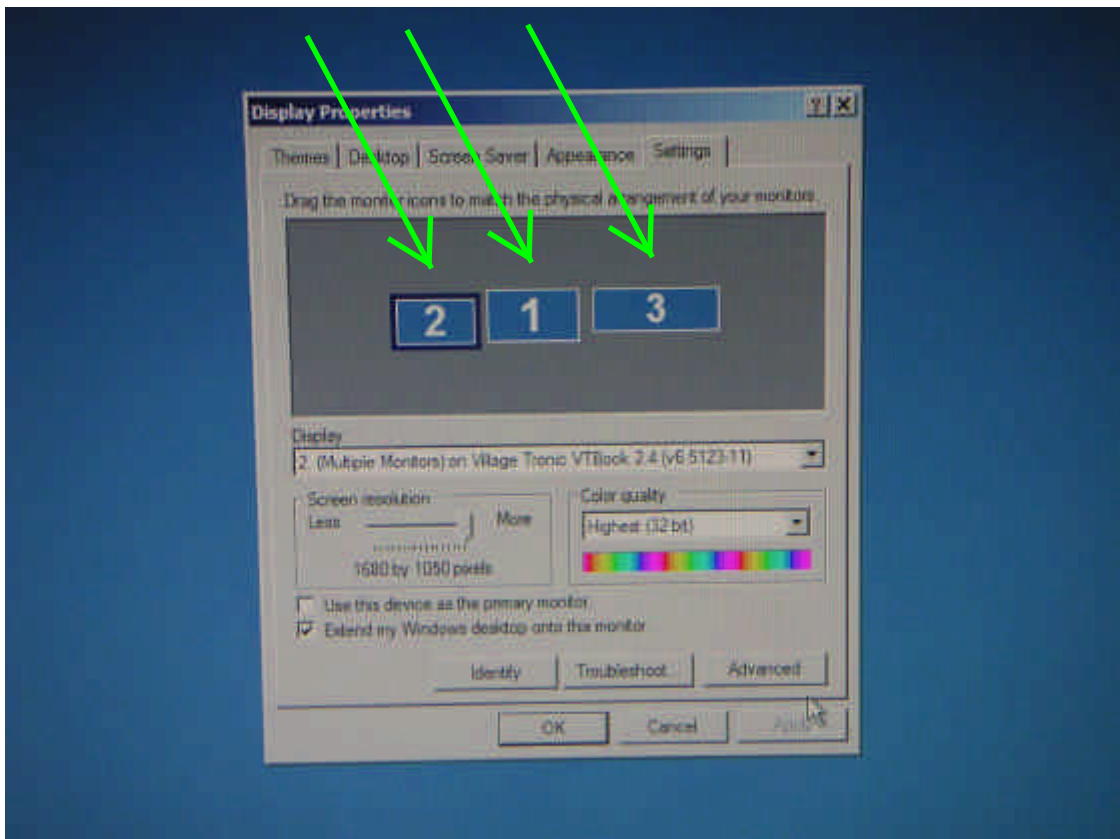
2, 1, 3

or

etc.

Why is this necessary?

In the ideal situation you want to have your desktop
(this is the visible screen area)
extend from left to right,
but if your computer does not recognize the monitors in this order
you have to re-arrange them in this dialog box.



If you still may be having problems,
you might have to adjust the

Screen resolution and/or the Color quality

by dragging the slider left (to decrease the resolution) or by using the pull down menu.

The reason:

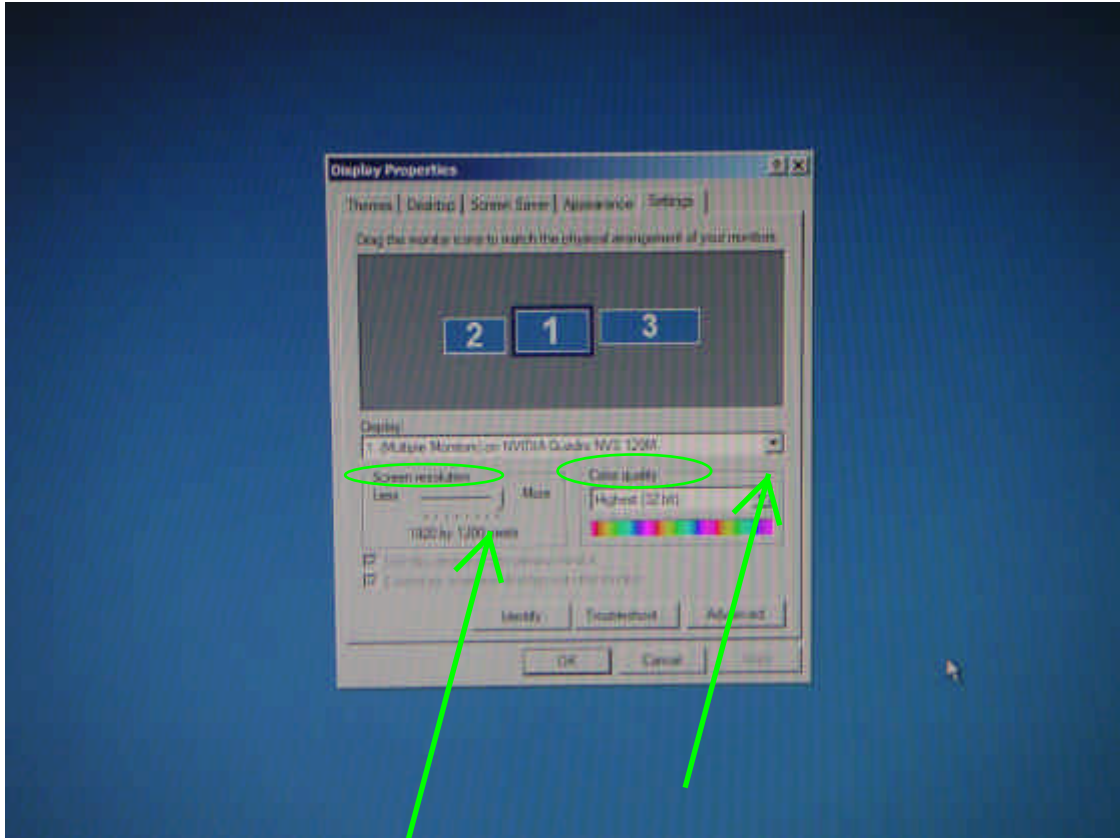
If the graphics card in your laptop is not powerful enough,
it will have a hard time to control all this space.

So, check out **first** what you've got available as graphics card in your laptop.

It should support multiple monitors.

Therefore, take that into consideration when you buy your next laptop.

BUT...



If you've got plenty of money...

(Around US\$1100... Please check the website.)

You could buy a

Magma PCI Expansion System

With this you attach

a so called "expansion chassis"

to your computer

This chassis can house almost anything you like...

Graphics cards, hard drives etc....

(They have to be bought separately.)

Various connection options are available:

Standard PCI,
Low Profile PCI,
CardBus (PCMCIA),
PCI Express® and
ExpressCard™

For more information please see here:

<http://www.magma.com/products/pci/>

This document has 22 pages. This is page 20 of 22.
Compiled by: Josip M. Korbar (j.m.korbar@litt-translations.com)

If you are just interested to add more monitors

then the **SideCar** by **Digital Tigers**

might be your ideal choice.

Again, this is quite pricey...

(Prices vary according to specification... Please check the website.)

For more information please see here:

<http://www.digitaltigers.com/sidecar.asp>

and

<http://www.digitaltigers.com/notebooks.asp>

The latter gives more specific information about notebook compatibility, e.g. according to that website **SideCar** would not work with my laptop.

If you've got another laptop lying around
you might consider
MaxiVista

For more information please see here:

<http://www.maxivista.com/>

This document has 22 pages. This is page 21 of 22.
Compiled by: Josip M. Korbar (j.m.korbar@litt-translations.com)

A **very useful** website address where you will find much more detailed information is:

<http://www.realtimesoft.com/ultramon/>

Of particular interest to you are the following sections:

<http://www.realtimesoft.com/multimon/guide/laptops.asp>

<http://www.realtimesoft.com/multimon/products.asp>

If you are looking for options how to arrange your monitors physically have a look at this German website:

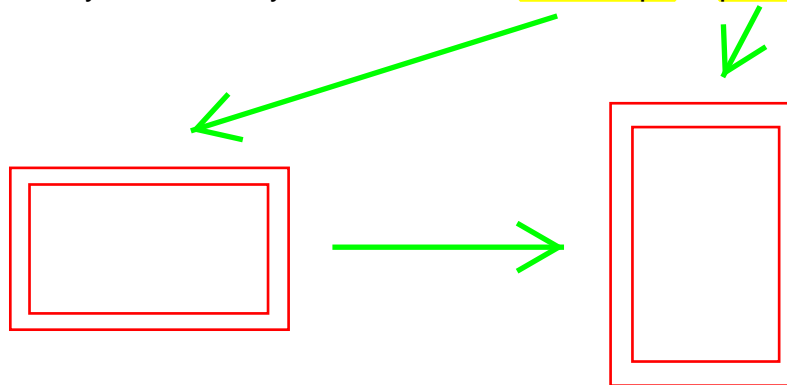
<http://monitorhalterung.de/>

My colleague
Tobias Ernst
www.tf-translate.net

has pointed out the following software to me:

http://www.portrait.com/us/products/pp_overview.html

Using this software you can turn your monitor from **landscape** to **portrait** orientation, i.e.



This can be useful for 17" and 19" monitors to make better use of their size.
Using a pivot mount you can turn your monitor also physically. Please see again the following website:

<http://monitorhalterung.de/>

This document has 22 pages. This is page 22 of 22.
Compiled by: Josip M. Korbar (j.m.korbar@litt-translations.com)

This is the **last** page.

If you have specific questions
regarding the specific solution presented here
on the pages 2 to 14

please contact:

Josip M. Korbar
j.m.korbar@litt-translations.com

For all other options please consult the various websites mentioned before.

The inevitable “small print”.

Please read.

Thank you.

This document may contain factual errors of any kind (technical, spelling etc.).

This is **not** intended, but I cannot exclude it.

**Therefore, I disclaim any responsibility
for errors or damages of whatever kind to your software or your hardware
caused by following the suggestions in this document.**

Please check always FIRST
with the manufacturers of the various products mentioned here
whether they are suitable for YOUR computer!

It could be for whatever reason that neither of the suggested solutions
will work on your computer.

Please remember:

Always backup your computer
before making any changes to your system.
You may lose data if you do not follow the
guidelines, instructions and/or
user manuals of the manufacturers.

No alterations to this document are permitted.
This document is intentionally protected.

Printing, copying and pasting is not possible.

Thank you for reading for the “small print”.

Document compilation date: 5 April 2008.